

Mayer/Reed



# FROG POND NEIGHBORHOOD PARK

Development Review Board Public Hearing (DB24-0004/SDR24-0002/TPLN24-0002/SIGN24-0007/SROZ24-0001/SRIR24-0001)

# PUBLIC INPUT

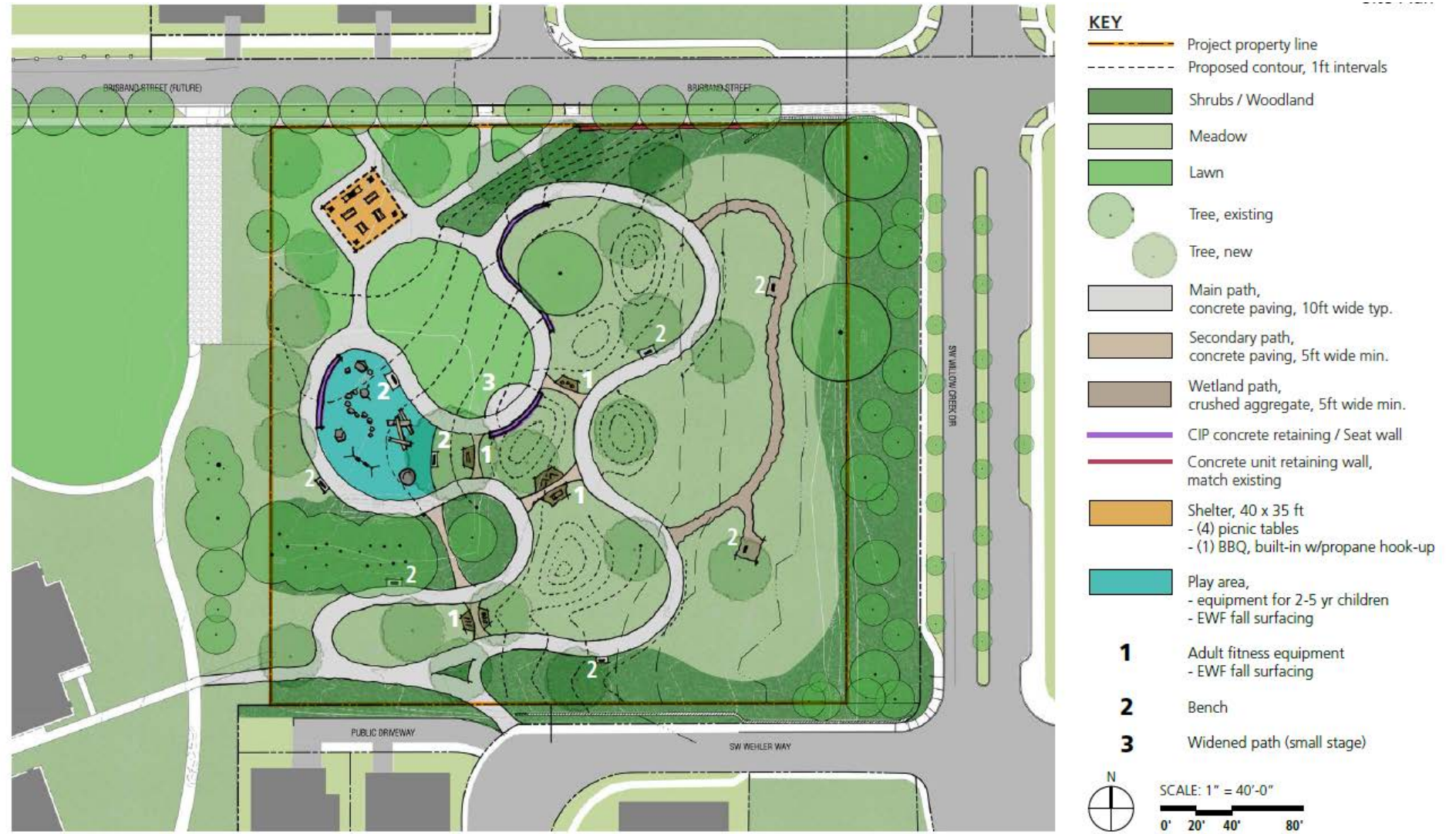


# PUBLIC INPUT

**Figure 37.** Neighborhood Park Design



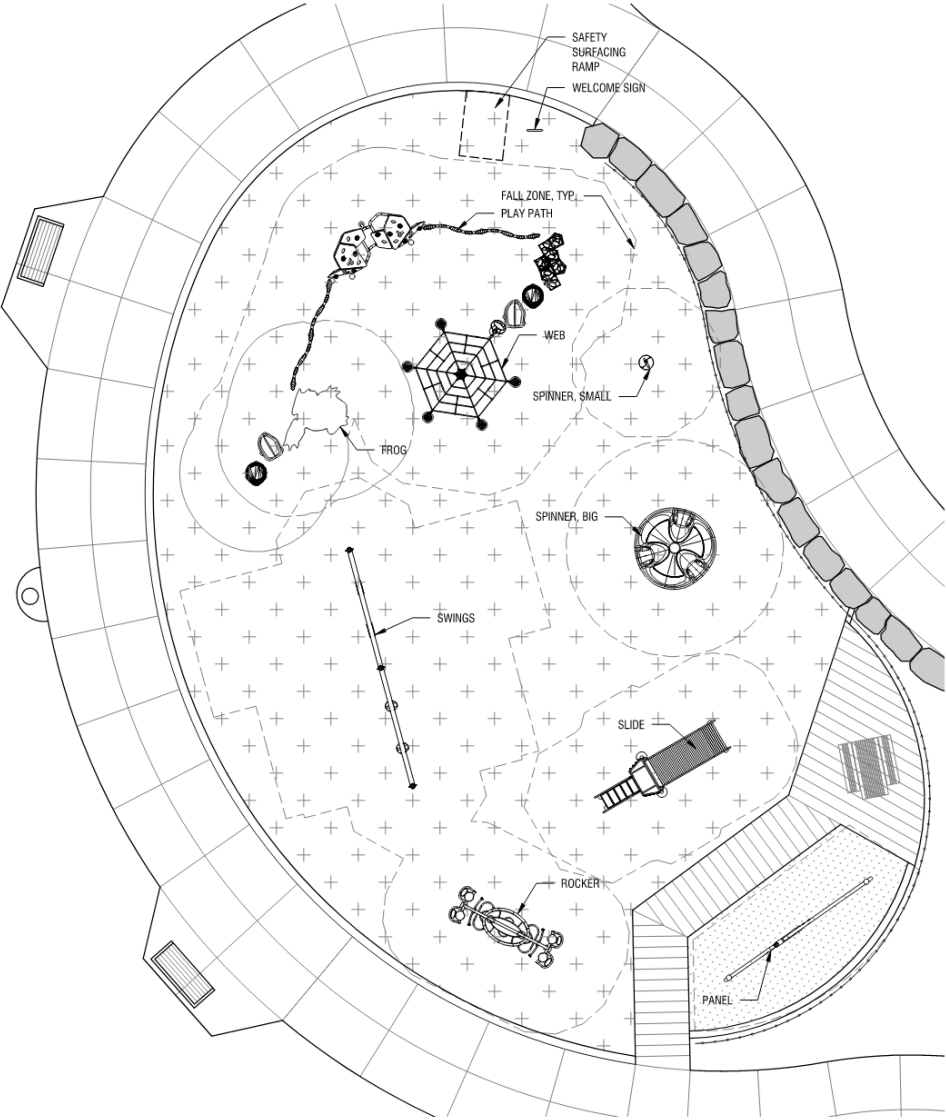
# PUBLIC INPUT



# PROPOSAL



# PLAY AREA



# PLAY AREA EQUIPMENT

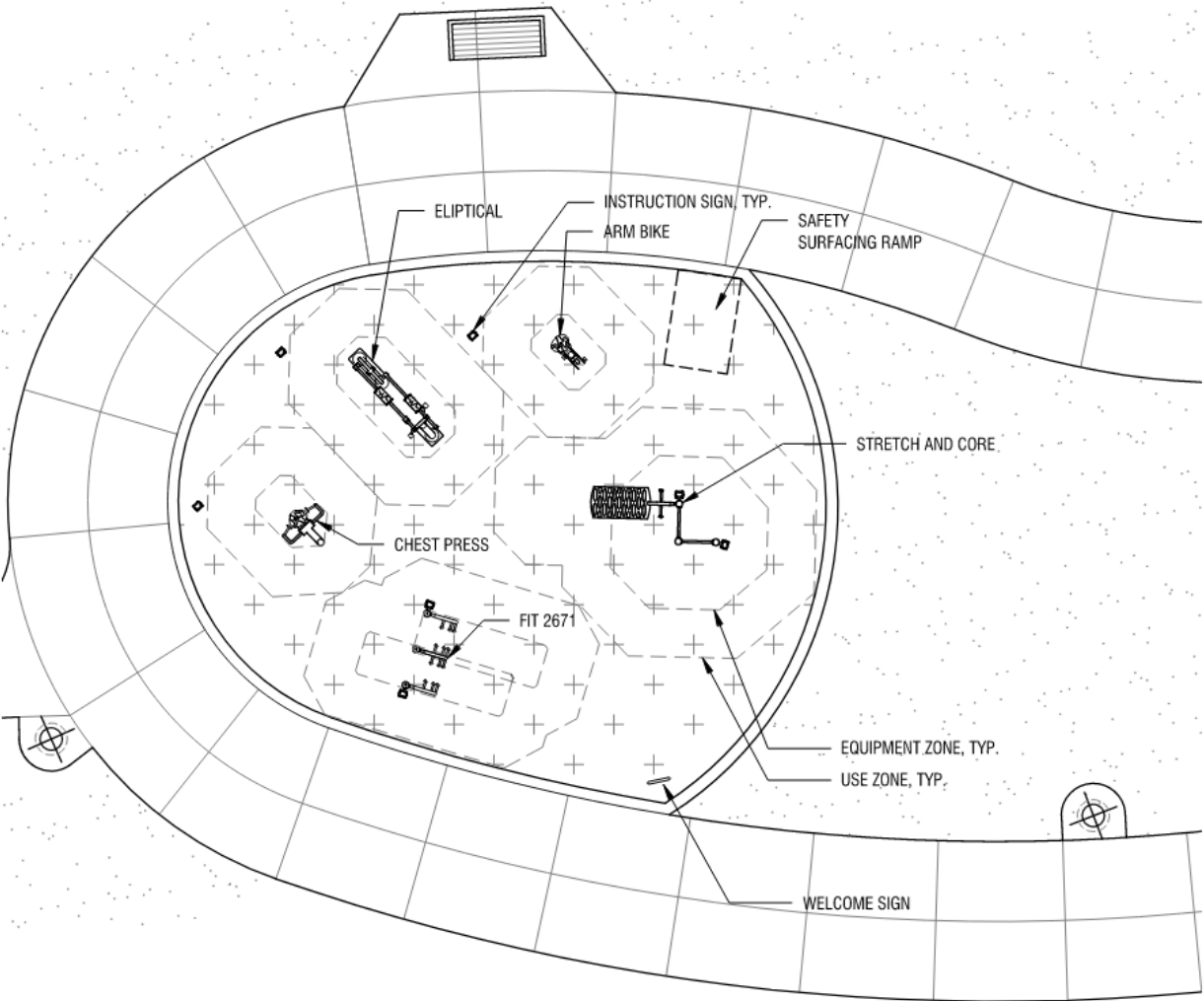


# PROPOSAL





# FITNESS AREA



# FITNESS AREA EQUIPMENT



# FITNESS AREA EQUIPMENT - COLORS



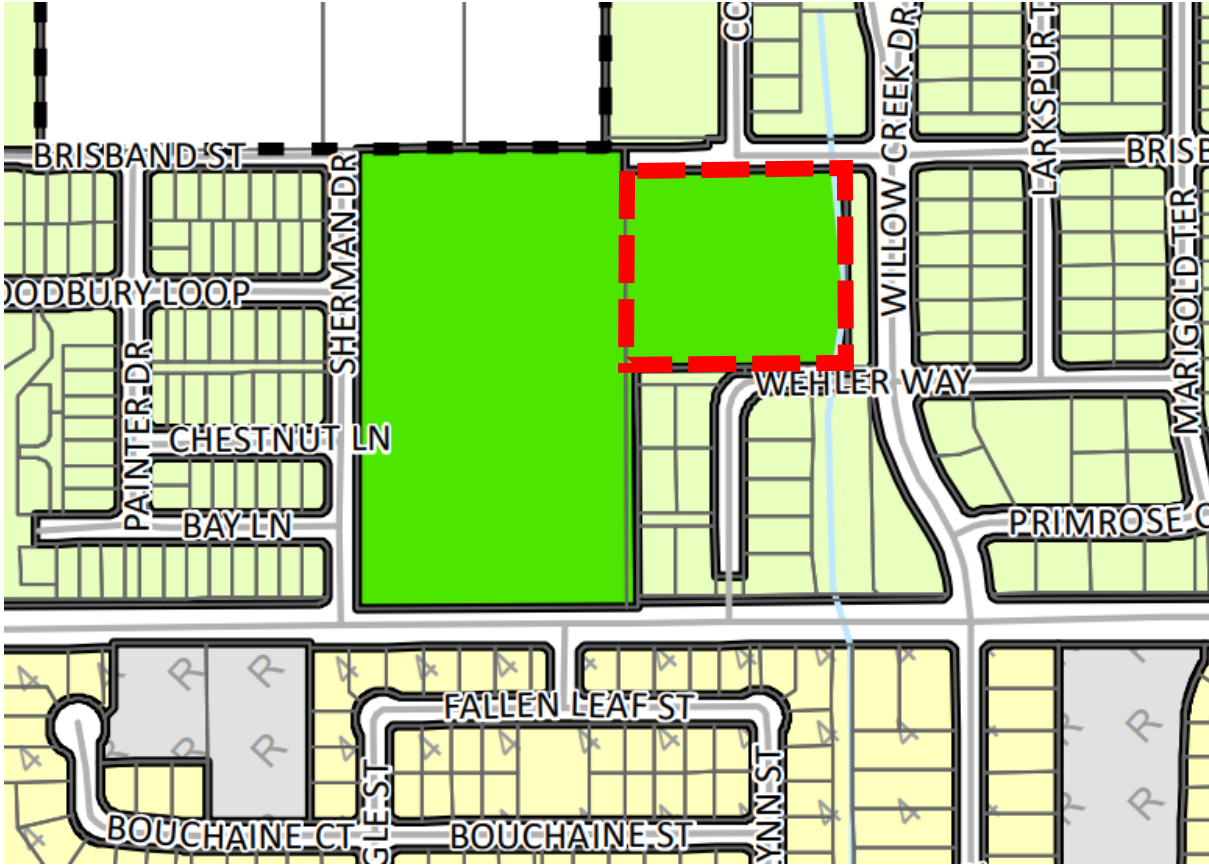
# PROPOSAL



# ZONING

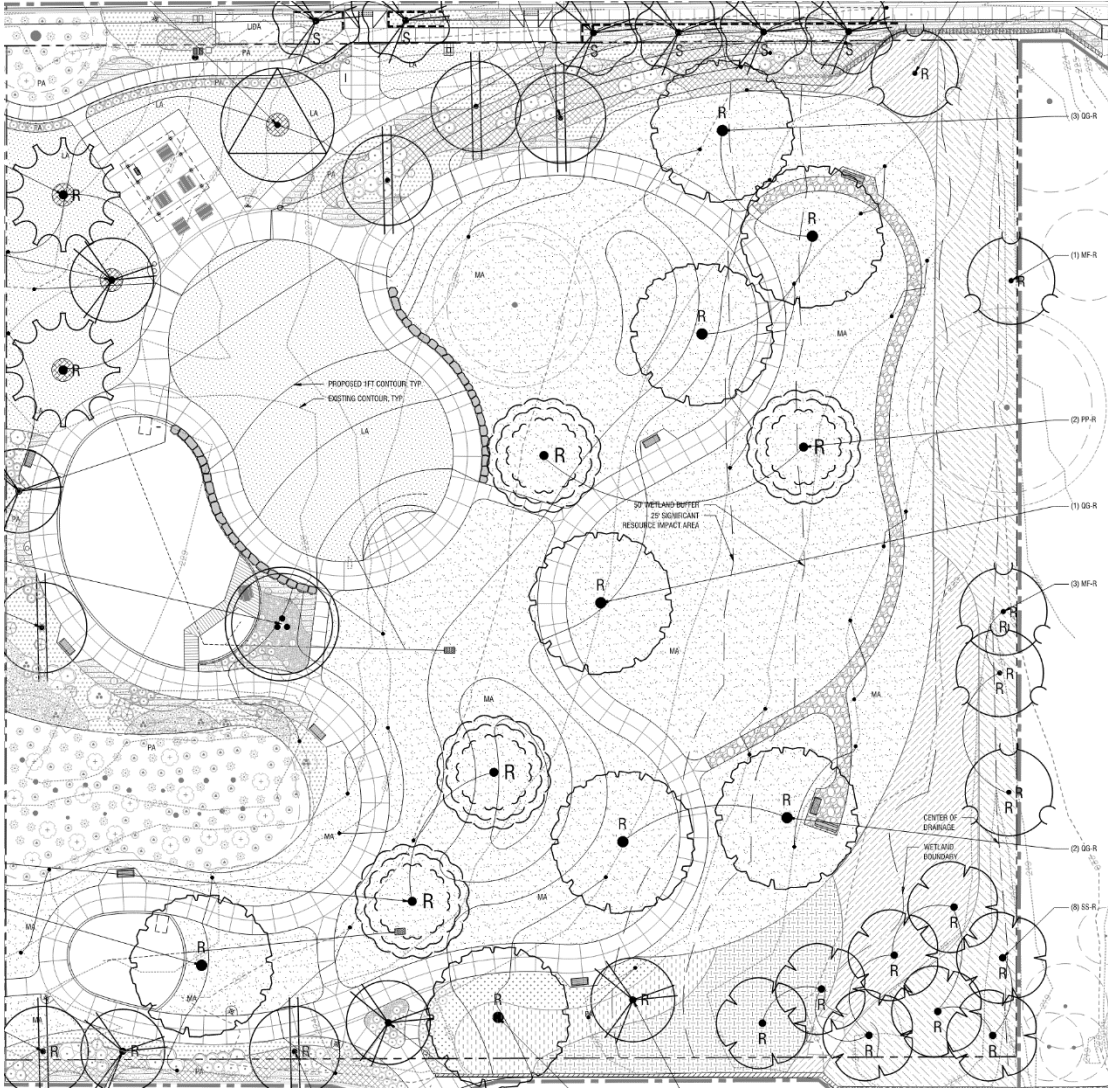
## Public Facility (PF)

- Provides for opportunity for public lands and facilities which serve and benefit the community of Wilsonville and its citizens



# TREE PRESERVATION

Treatment	Number of Trees
On-Site Trees	29
Off-Site Trees	20
Total	49
Retained	40 (82%)
Removed (Invasive)	3
Removed (Poor Condition)	4
Removed (Fair Condition)	1
Removed (Good Condition - Pest)	1



# REVISIONS



**THANK YOU**